


Detail & Submittal Sheet

Construction Specifications:

Bubble Canopy (BC) cabinet fronts are 16 gauge cold rolled steel with 22 gauge cold rolled steel tubs. Cabinets offer a sleek design including a convex acrylic bubble door extending out from the trim, permitting 180° of visibility for quick identification of the extinguisher.

 **To comply with ADA Guidelines**, Extinguishers and Cabinets offer handles, brackets and turnbacks according to instructions provided by installer. For ADA compliance follow the specification ordering process dimensions in our catalog. Proper installation in accordance with the ADA Guidelines is the sole responsibility of the installer. For more information please visit the Accessibility Guidelines for Buildings and Facilities website or call them at 1-800-872-2253.

Project: _____
 Specification Reference: _____
 Model Number: _____ Quantity: _____
 Architect: _____
 Contractor: _____
 Distributor: _____
 Approved By: _____
 Date: _____

SPECIFICATION PROCESS: Follow the steps below to specify your cabinet.

Options at additional cost.

STEP 1: EXTINGUISHER SIZE:

1 - 10 lb. 2 - 20 lb.

STEP 2: CABINET STYLE:

0 - Surface Mounted (S)
 1 - Semi-Recessed (SR)
 2 - Fully-Recessed (FR)

STEP 3: DOOR STYLE:

Bubble Only

STEP 4: SERIES:

BC - Bubble Cabinet

STEP 5: CABINET TYPE:

SG - SAFEGUARD - Fire Rated

STEP 6: FINISH OPTIONS:

- SSF - Stainless Steel Front
- FSS - Full Stainless Steel
- AL - Aluminum Front
- FAL - Full Aluminum
- RD - Red Coated

STEP 5: HANDLE OPTIONS:

- 008 - Safety Break Lock
- 010 - Alum. Die Cast Red "Fire" Handle
- 012 - ADA Handle

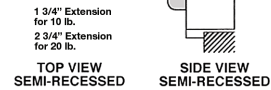
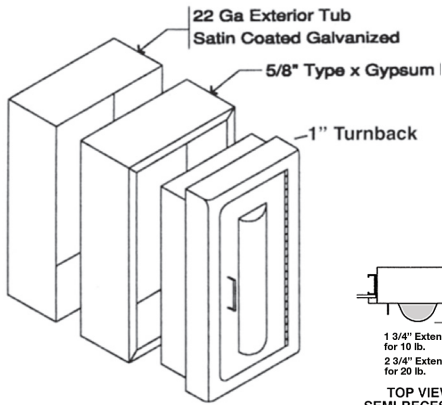
STEP 7: GLAZING:

Bubble Only

STEP 8: LETTERING:

- 004 - Decal "Fire Ext." Lrg Vert R/B

SAFEGUARD Fire Rating Assembly



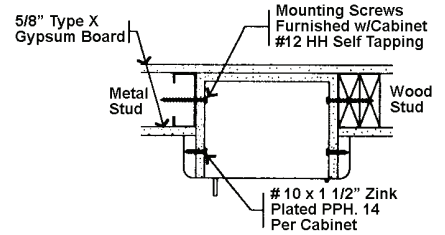
Replacement Acrylic (decal sold separately)



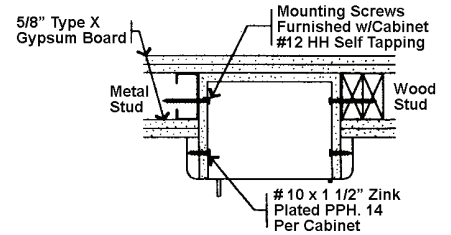
SAFEGUARD

Typical Semi-Recessed Fire Wall Installation

ONE HOUR FIRE WALL SYSTEM



TWO HOUR FIRE WALL SYSTEM



WARNOCK HERSEY UL Classified 5/8" Type X gypsum board LISTED® inserted in the cavity between the two layers. Warnock Hersey has approved the Safeguard Cabinets to be mounted in any face of fire rated steel or wood stud for up to 2 hour rated walls without affecting its fire rating. The above meets the requirement test ASTM-E119-98 with test report WHI-495-1534. MOUNTING INSTRUCTIONS are supplied with each safeguard cabinet.

✓	Mod. #	Interior Tub Size			Overall Outside Trim		Rough Opening			Turnback	SAFEGUARD Rough Opening			SAFEGUARD Turnback	Accom. Ext Size
		W	H	D	W	H	W	H	D		W	H	D	Lbs.	
Surface Mounted															
	10-BC	10 1/2"	24"	4 1/2"	11"	24 1/2"	-	-	-	-	-	-	-	-	10
Semi-Recessed															
	11-BC	10 1/2"	24"	4 1/2"	14 1/2"	28"	10 3/4"	24 1/4"	3"	1 1/2"	12 1/4"	25 3/4"	3 3/4"	1 1/2"	10
	21-BC	14"	30"	4 3/4"	18 1/2"	34"	14 3/4"	30 1/4"	4 1/4"	1	16 1/4"	31 3/4"	5"	1"	20
Fully-Recessed															
	12-BC	10 1/2"	24"	4 1/2"	14 1/2"	28"	10 3/4"	24 1/4"	4 1/2"	1/4"	12 1/4"	25 3/4"	5 1/4"	1/4"	10
Replacement Bubble*															
	AC-Bubble 10	6 3/4"	21 1/2"	1 3/4"	Breakable Acrylic										
	AC-Bubble 20	8 1/2"	22 1/4"	2 3/4"	Breakable Acrylic										
	Poly-Bubble 10	6 3/4"	21 1/2"	1 3/4"	Non-Break Polycarbonate										
	Poly-Bubble 20	8 1/2"	22 1/4"	2 3/4"	Non-Break Polycarbonate										

