


**Detail & Submittal Sheet**

**Construction Specifications:**

**Bubble Canopy (BC)** cabinet fronts are 16 gauge cold rolled steel with 22 gauge cold rolled steel tubs. They are also available in full aluminum. These cabinets offer a sleek design including a convex acrylic bubble door extending out from the trim. This view permits 180° of visibility for quick identification of the extinguisher. This cabinet standard with chrome D handle.

 **To comply with ADA Guidelines**, Extinguishers and Cabinets offer handles, brackets and turnbacks according to instructions provided by installer. For ADA compliance follow the specification ordering process dimensions in our catalog. Proper installation in accordance with the ADA Guidelines is the sole responsibility of the installer. For more information please visit the Accessibility Guidelines for Buildings and Facilities website or call them at 1-800-872-2253.

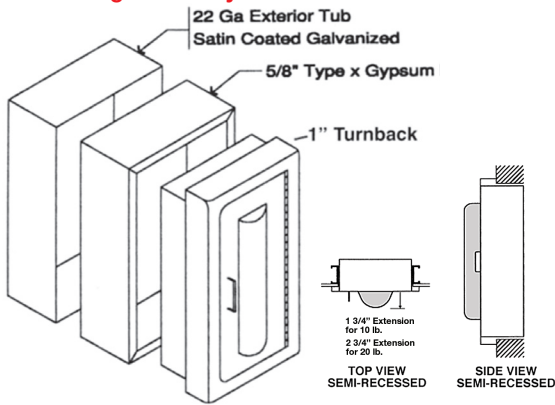
Project: \_\_\_\_\_  
 Specification Reference: \_\_\_\_\_  
 Model Number: \_\_\_\_\_ Quantity: \_\_\_\_\_  
 Architect: \_\_\_\_\_  
 Contractor: \_\_\_\_\_  
 Distributor: \_\_\_\_\_  
 Approved By: \_\_\_\_\_  
 Date: \_\_\_\_\_

**SPECIFICATION PROCESS:** Follow the steps below to specify your cabinet. Options at additional cost.

- STEP 1: EXTINGUISHER SIZE:**  
 1 - 10 lb. 2 - 20 lb.
- STEP 2: CABINET STYLE:**  
 0 - Surface Mounted (S)  
 2 - Fully-Recessed (FR)
- STEP 3: DOOR STYLE:**  
 Bubble Only
- STEP 4: SERIES:**  
 BC - Bubble Cabinet
- STEP 5: CABINET TYPE:**  
 SG - SAFEGUARD - Fire Rated

- STEP 6: FINISH OPTIONS:**
- SSF - Stainless Steel Front, #4 finish: 304 (standard) or 316\*\* (optional)
  - FSS - Full Stainless Steel, #4 finish: 304 (standard) or 316\*\* (optional)
  - AL - Aluminum Front
  - FAL - Full Aluminum
  - RD - Red Coated
- STEP 5: HANDLE OPTIONS:**
- 008 - Safety Break Lock
  - 010 - Alum. Die Cast Red "Fire" Handle
  - 012 - ADA Recessed Handle
- STEP 7: GLAZING:**  
 Bubble Only
- STEP 8: LETTERING:**  
 004 - Decal "Fire Ext." Lrg Vert R/B

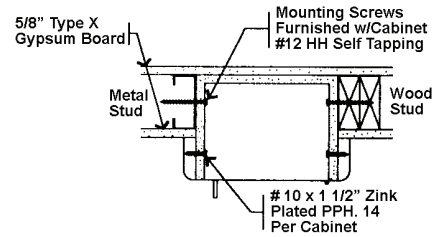
**SAFEGUARD Fire Rating Assembly**



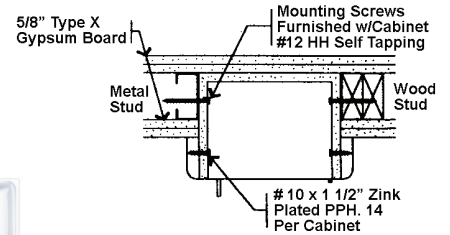
**Replacement Acrylic (decals sold separately)**

\*\* 316 SS contains 2%-3% molybdenum, added to improve corrosion resistance to chlorides (like sea water).  
 304 SS has no molybdenum

**SAFEGUARD Typical Semi-Recessed Fire Rated Installation ONE HOUR FIRE WALL SYSTEM**



**TWO HOUR FIRE WALL SYSTEM**



WARNOCK HERSEY LISTED UL Classified 5/8" Type X gypsum board inserted in the cavity between the two layers. Warnock Hersey has approved the Safeguard Cabinets to be mounted in any face of fire rated steel or wood stud for up to 2 hour rated walls without affecting its fire rating. The above meets the requirement test ASTM-E119-98 with test report WHI-495-1534. MOUNTING INSTRUCTIONS are supplied with each safeguard cabinet.

| ✓                          | Mod. #         | Interior Tub Size |         |        | Overall Outside Trim    |         | Rough Opening |         |        | Turnback | ADA | SAFEGUARD Rough Opening |         |        | SAFEGUARD Turnback |    | Accom. Ext Size | ADA |
|----------------------------|----------------|-------------------|---------|--------|-------------------------|---------|---------------|---------|--------|----------|-----|-------------------------|---------|--------|--------------------|----|-----------------|-----|
|                            |                | W                 | H       | D      | W                       | H       | W             | H       | D      |          |     | W                       | H       | D      | Lbs.               |    |                 |     |
| <b>Surface Mounted</b>     |                |                   |         |        |                         |         |               |         |        |          |     |                         |         |        |                    |    |                 |     |
|                            | 10-BC          | 10 1/2"           | 24"     | 4 1/2" | 11"                     | 24 1/2" | -             | -       | -      | -        | -   | -                       | -       | -      | -                  | -  | 10              | -   |
| <b>Semi-Recessed</b>       |                |                   |         |        |                         |         |               |         |        |          |     |                         |         |        |                    |    |                 |     |
|                            | 11-BC          | 10 1/2"           | 24"     | 4 1/2" | 14 1/2"                 | 28"     | 10 3/4"       | 24 1/4" | 3"     | 1 1/2"   | ✓   | 12 1/4"                 | 25 3/4" | 3 3/4" | 1 1/2"             | 10 | ✓               |     |
|                            | 21-BC          | 14"               | 30"     | 4 3/4" | 18 1/2"                 | 34"     | 14 3/4"       | 30 1/4" | 4 1/4" | 1        | ✓   | 16 1/4"                 | 31 3/4" | 5"     | 1"                 | 20 | ✓               |     |
| <b>Fully-Recessed</b>      |                |                   |         |        |                         |         |               |         |        |          |     |                         |         |        |                    |    |                 |     |
|                            | 12-BC          | 10 1/2"           | 24"     | 4 1/2" | 14 1/2"                 | 28"     | 10 3/4"       | 24 1/4" | 4 1/2" | 1/4"     | ✓   | 12 1/4"                 | 25 3/4" | 5 1/4" | 1/4"               | 10 | ✓               |     |
| <b>Replacement Bubble*</b> |                |                   |         |        |                         |         |               |         |        |          |     |                         |         |        |                    |    |                 |     |
|                            | AC-Bubble 10   | 6 3/4"            | 21 1/2" | 1 3/4" | Breakable Acrylic       |         |               |         |        |          |     |                         |         |        |                    |    |                 |     |
|                            | AC-Bubble 20   | 8 1/2"            | 22 1/4" | 2 3/4" | Breakable Acrylic       |         |               |         |        |          |     |                         |         |        |                    |    |                 |     |
|                            | Poly-Bubble 10 | 6 3/4"            | 21 1/2" | 1 3/4" | Non-Break Polycarbonate |         |               |         |        |          |     |                         |         |        |                    |    |                 |     |
|                            | Poly-Bubble 20 | 8 1/2"            | 22 1/4" | 2 3/4" | Non-Break Polycarbonate |         |               |         |        |          |     |                         |         |        |                    |    |                 |     |

✓ADA Compliant

Revised 7-2017

view our profile on    Find us in  American Made  Family Owned & Operated Since 1990  Selling only through distribution See us on  Like us on 